

Proposed Auckland Unitary Plan Submissions
Zone requests

South Urban (Central & West)

Legend

Geographical Area Topic

Geographical Area Topic

UNITARY PLAN ZONES

- Special Purpose
- Large Lot
- Single House
- Mixed Housing Suburban
- Mixed Housing Urban
- Terrace Housing and Apartment Buildings
- Future Urban
- Green Infrastructure Corridor
- Rural and Coastal Settlement
- Neighbourhood Centre
- Local Centre
- Town Centre
- Metropolitan Centre
- City Centre
- Mixed Use
- General Business
- Business Park
- Light Industry
- Heavy Industry
- Rural Conservation
- Countryside Living
- Rural Coastal
- Mixed Rural
- Rural Production
- Public Open Space - Conservation
- Public Open Space - Informal Recreation
- Public Open Space - Sport and Active Recreation
- Public Open Space - Community
- Public Open Space - Civic Spaces
- Strategic Transport Corridor
- Road [i]
- Defence [rcp/dp]
- Ferry Terminal [rcp/dp]
- Minor Port [rcp/dp]
- Marina [rcp/dp]
- Mooring [rcp]
- General Coastal Marine [rcp]
- Water [i]
- Coastal Transition
- Hauraki Gulf Islands



1:62,300 @ A3

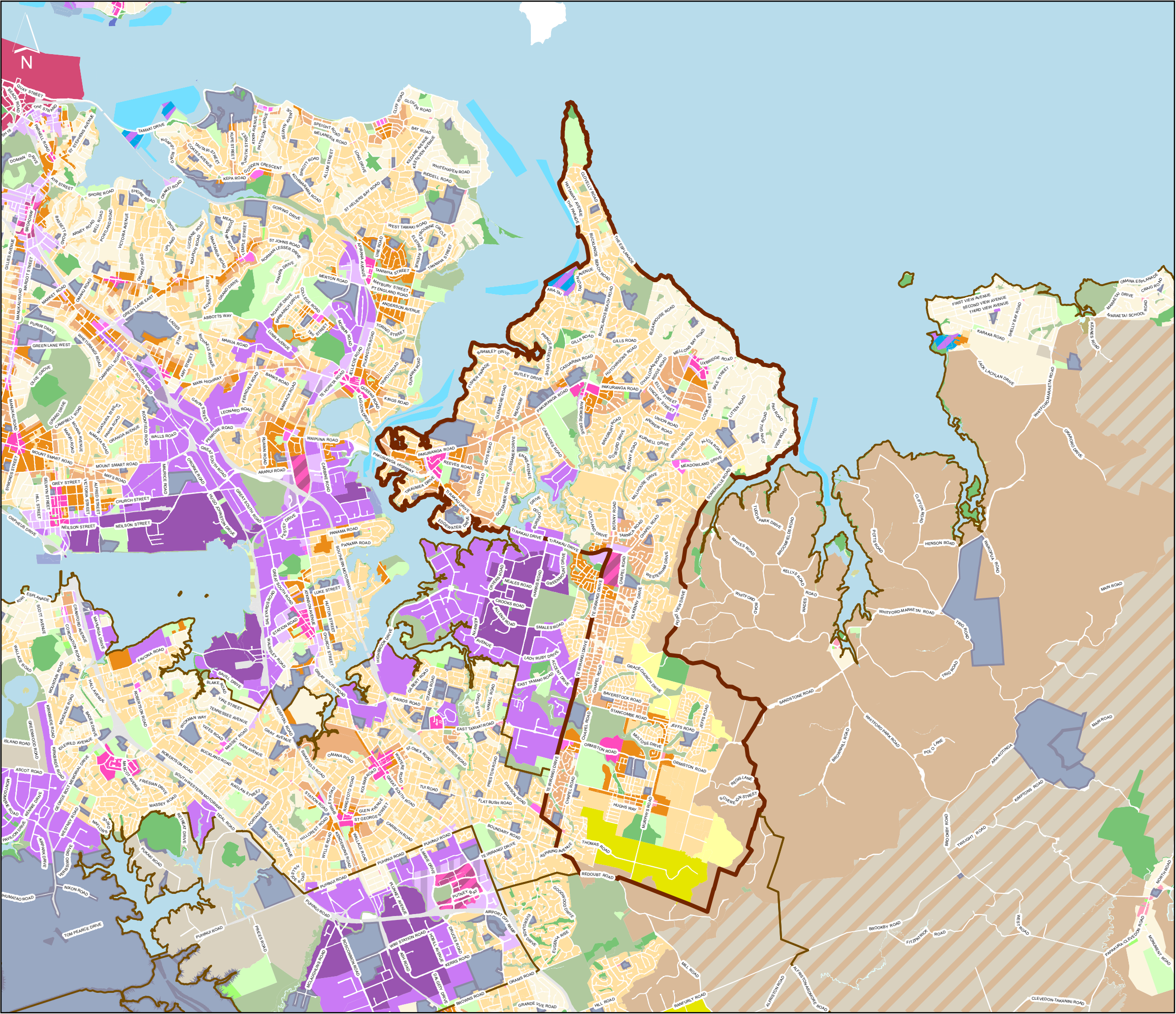
Whilst due care has been taken, Auckland Council gives no warranty as to the accuracy and completeness of any information on this map/plan and accepts no liability for any error, omission or use of the information.

Date: 15/06/2015

South



Auckland Council



Proposed Auckland Unitary Plan Submissions
Zone requests

South Urban (North & East)

Legend

Geographical Area Topic

Geographical Area Topic

UNITARY PLAN ZONES

- Special Purpose
- Large Lot
- Single House
- Mixed Housing Suburban
- Mixed Housing Urban
- Terrace Housing and Apartment Buildings
- Future Urban
- Green Infrastructure Corridor
- Rural and Coastal Settlement
- Neighbourhood Centre
- Local Centre
- Town Centre
- Metropolitan Centre
- City Centre
- Mixed Use
- General Business
- Business Park
- Light Industry
- Heavy Industry
- Rural Conservation
- Countryside Living
- Rural Coastal
- Mixed Rural
- Rural Production
- Public Open Space - Conservation
- Public Open Space - Informal Recreation
- Public Open Space - Sport and Active Recreation
- Public Open Space - Community
- Public Open Space - Civic Spaces
- Strategic Transport Corridor
- Road [i]
- Defence [rcp/dp]
- Ferry Terminal [rcp/dp]
- Minor Port [rcp/dp]
- Marina [rcp/dp]
- Mooring [rcp]
- General Coastal Marine [rcp]
- Water [i]
- Coastal Transition
- Hauraki Gulf Islands



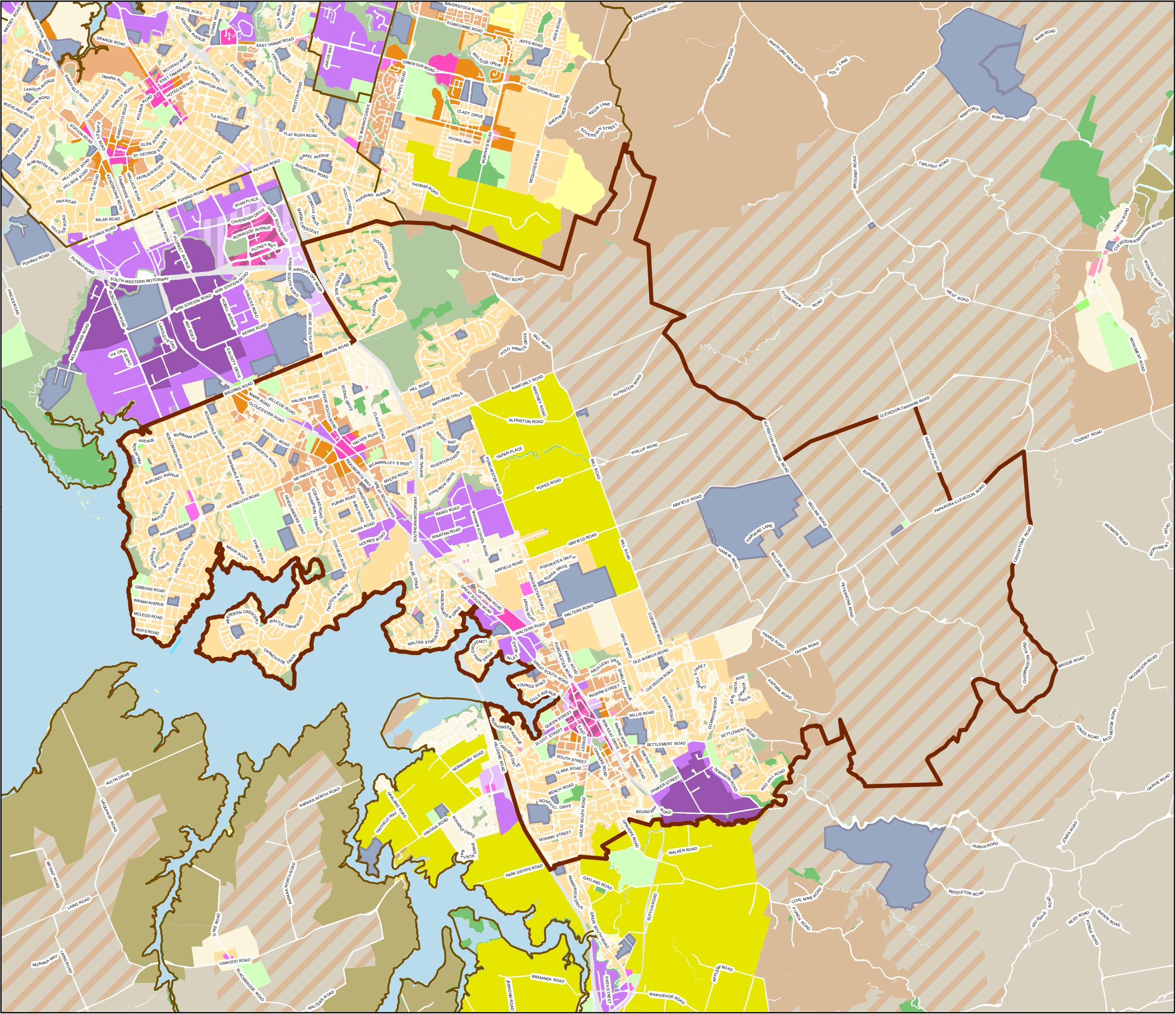
1:76,200 @ A3

Whilst due care has been taken, Auckland Council gives no warranty as to the accuracy and completeness of any information on this map/plan and accepts no liability for any error, omission or use of the information.

Date: 15/06/2015

South





Proposed Auckland Unitary Plan Submissions

Zone requests

South Urban (South)

Legend

Geographical Area Topic

Geographical Area Topic

UNITARY PLAN ZONES

- Special Purpose
- Large Lot
- Single House
- Mixed Housing Suburban
- Mixed Housing Urban
- Terrace Housing and Apartment Buildings
- Future Urban
- Green Infrastructure Corridor
- Rural and Coastal Settlement
- Neighbourhood Centre
- Local Centre
- Town Centre
- Metropolitan Centre
- City Centre
- Mixed Use
- General Business
- Business Park
- Light Industry
- Heavy Industry
- Rural Conservation
- Countryside Living
- Rural Coastal
- Mixed Rural
- Rural Production
- Public Open Space - Conservation
- Public Open Space - Informal Recreation
- Public Open Space - Sport and Active Recreation
- Public Open Space - Community
- Public Open Space - Civic Spaces
- Strategic Transport Corridor
- Road [I]
- Defence [rcp/dp]
- Ferry Terminal [rcp/dp]
- Minor Port [rcp/dp]
- Marina [rcp/dp]
- Mooring [rcp]
- General Coastal Marine [rcp]
- Water [I]
- Coastal Transition
- Hauraki Gulf Islands



1:62,100 @ A3

Whilst due care has been taken, Auckland Council gives no warranty as to the accuracy and completeness of any information on this map/plan and accepts no liability for any error, omission or use of the information.

Date: 15/06/2015

South

